

Learning Disability Programme: What we have done

What is this report about?



Our programme wants to make health and care services safer and better for people with a learning disability in Wales.

This report tells you about the work we did between 2019 and 2025.



We worked on new education and safety projects across Wales.



We made a safety tool for people with a learning disability in Wales. It is called the 'Once for Wales **Health Profile**.'

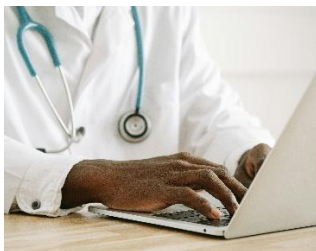
Definition: A **Health Profile** is a document that makes it easier to tell healthcare staff what you need. It can include information about your health history, how you like to communicate, your allergies, and your medicines.



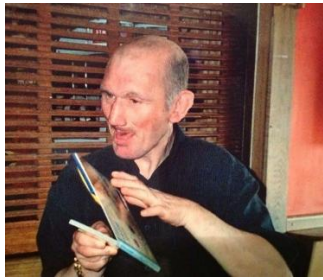
We made an **education pack** to give information to doctors and nurses so they can give better **Annual Health Checks**.

Definition: An '**education pack**' is a group of documents that helps people to learn about a something. It can include things like booklets, checklists, pictures, videos, and other things.

Definition: An '**Annual Health Check**' is when someone with a learning disability talks to a doctor or nurse about their health. This should happen once a year. It helps you to find any problems early so they can be sorted out.



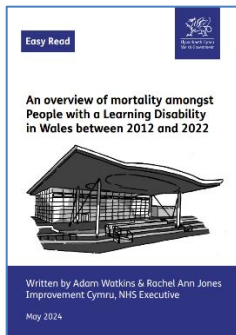
We made another education pack about Annual Health Checks for people who work in primary care services. This includes your local doctor surgery, dentist, or pharmacy.



Over 70,000 healthcare workers completed our training to understand more about supporting people with a learning disability. This helps them to be more aware of your needs.



We used information to make good decisions.



We looked at the deaths of people with a learning disability in Wales. This was the first time this type of work had been done. The results have been used to make decisions about services in Wales.



We paid for new research to take place to understand what children and young people with a learning disability need.



We gave £100,000 to six projects to try out new ways of working in health, social care, and schools. We shared the lessons they learned so other people can try the same ideas.



We made a tool to measure what is happening to people with a learning disability when they receive healthcare. It also finds out where they face unfair treatment.



We led work with people and organisations in Wales, the United Kingdom, and around the world.



We created the first 'National Vision and Action Plan for Children and Young People with a Learning Disability.' Over 1,000 people from the learning disability community were involved in this work.



We set up a group to make sure plans for inpatient and community services are made properly. The members of the group are experts from across Wales.

Definition: An '**inpatient**' is someone who is staying in hospital to receive care and treatment.



We helped to make standards better across services who give care.



We gave expert advice to organisations like Healthcare Inspectorate Wales.



Hundreds of people joined communities and networks hosted by us. They learned from each other at meetings.



If you like to know more about our work, please go to:

www.improvementcymru.net/ld-national-network